



Welcome to the
Community & Public Facilities
Focus Group
Sponsored by the
Montana Department of Commerce
In Support of Montana's
Five-Year Consolidated Plan



Why Prepare a Consolidated Plan?

- In 1994, HUD combined the planning and application process of four programs: HOME, CDBG, ESG and HOPWA
- In exchange for receiving funds, required to prepare a Five-Year Consolidated Plan, an Annual Action Plan and Analysis of Impediments to Fair Housing Choice



Purpose of the Consolidated Plan



- Identify housing and community development needs, priorities and strategies
- Indicate how state and federal funds will be allocated to address these needs and activities



Consolidated Plan Objectives



- **Provide decent housing**
- **Provide a suitable living environment**
- **Expand economic opportunities for lower-income citizens of the state**



Consolidated Plan Outcomes



- **Sustainability – enhance communities in the state**
- **Availability/Accessibility – benefit eligible individuals and families**
- **Affordability – create and/or maintain affordable housing**



Consolidated Plan Resources in FY 2014

- **Housing Opportunities for Persons with AIDS (HOPWA):** Tri-State Consortium
- **Emergency Solutions Grant (ESG):** \$638,154
- **HOME Investment Partnership (HOME):** \$3,017,887
- **Community Development Block Grant (CDBG):** \$5,847,967



Consolidated Plan Planning Process



- **Analysis of quantitative and qualitative data regarding need**
- **Public involvement and other agency input about need**
- **Development of strategy in response to identified needs**



Consolidated Plan Components

- **Assessment of Need and a Five Year Strategy to Address the Needs**
- **Annual Action Plans**
- **A Fair Housing Analysis and Plan**
- **Consolidated Annual Performance and Evaluation Report (CAPER)**



Contents of the Consolidated Plan

- **Needs Assessment and Strategic Plan:**
 - ✓ **Housing**
 - ✓ **Homeless**
 - ✓ **Community Development**
 - ✓ **Non-Housing Special Needs**
- **Documentation of Entire Process**



Applicable Activities In Community Development

➤ Community Development:

- ✓ Economic Development, jobs and businesses
- ✓ Community Development, such as community and public facilities, parks
- ✓ Infrastructure, e.g. water, sewer, roads



Contents of the P.F. Needs Assessment

- **Community and Public Facilities:**
 - ✓ **Define the community and public facility needs by type of facility**
 - ✓ **Prepare strategy to address community and public facility needs**



Purpose of Today's Meeting is to Support the CP

We hope to answer some of these questions:

- 1. What are our greatest C&PF needs?**
- 2. What are our current and future limitations in addressing C&PF needs?**
- 3. What policy barriers are there, if any?**
- 4. What are good first steps for the State?**



A Situation Review



What is the environment like today and what can we expect in the near future?

- 1. Demographic trends**
- 2. Economic influences**
- 3. Housing situation**
- 4. Preliminary findings of surveys**



Demographics:

Total Population by Race/Ethnicity

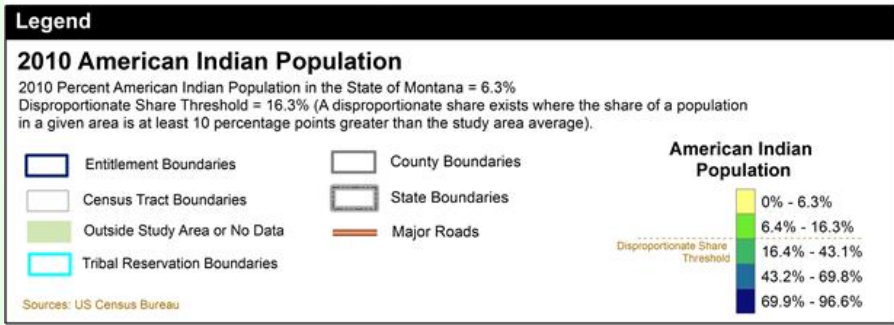
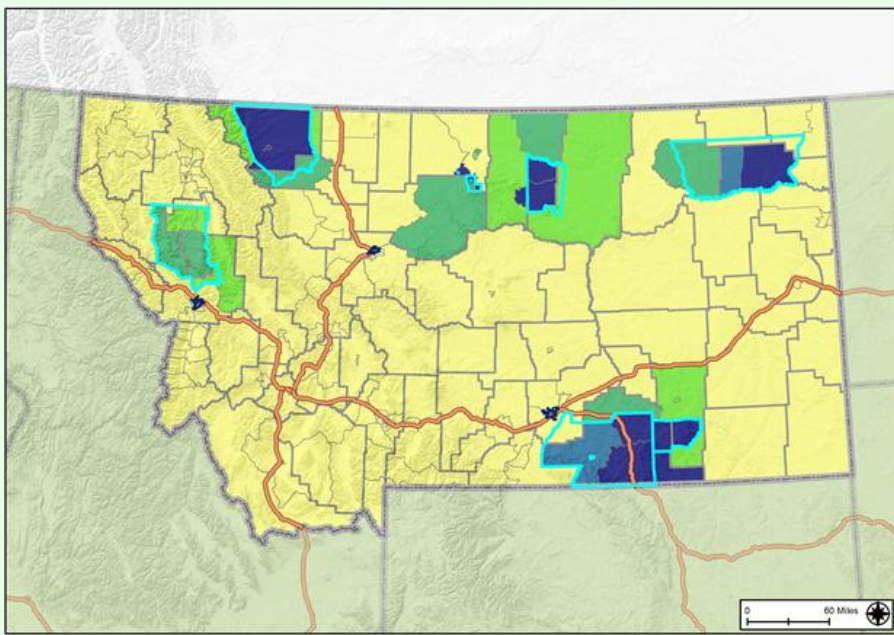
Population by Race and Ethnicity
 State of Montana
 2000 & 2010 Census SF1 Data

Race	2000 Census		2010 Census		% Change 00-10
	Population	% of Total	Population	% of Total	
White	817,229	90.6%	884,961	89.4%	8.3%
Black	2,692	.3%	4,027	.4%	49.6%
American Indian	56,068	6.2%	62,555	6.3%	11.6%
Asian	4,691	.5%	6,253	.6%	33.3%
Native Hawaiian/ Islander Pacific	470	.1%	668	.1%	42.1%
Other	5,315	.6%	5,975	.6%	12.4%
Two or More Races	15,730	1.7%	24,976	2.5%	58.8%
Total	902,195	100.0%	989,415	100.0%	9.7%
Non-Hispanic	884,114	98.0%	960,850	97.1%	8.7%
Hispanic	18,081	2.0%	28,565	2.9%	58.0%



Demographics:

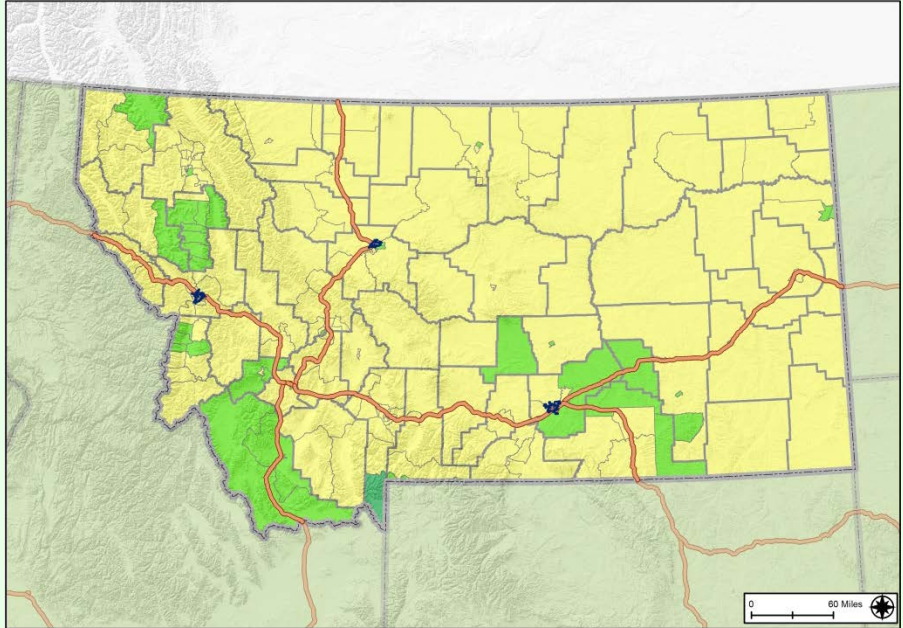
Percent American Indian by Census Tract: 2010 Census





Demographics:

Percent Hispanic Population by Census Tract: 2010 Census



Legend

2010 Hispanic Population
 2010 Percent Hispanic Population in the State of Montana = 2.9%
 Disproportionate Share Threshold = 12.9% (A disproportionate share exists where the share of a population in a given area is at least 10 percentage points greater than the study area average).

Entitlement Boundaries	County Boundaries	Hispanic Population 0% - 2.9% 3% - 12.9% 13% - 14.8% 14.9% - 16.7% 16.8% - 18.7%
Census Tract Boundaries	State Boundaries	
Outside Study Area or No Data	Major Roads	

Sources: US Census Bureau



Demographics: Population by Age

Population by Age
State of Montana
2000 & 2010 Census SF1 Data

Age	2000 Census		2010 Census		% Change 00-10
	Population	% of Total	Population	% of Total	
Under 5	54,869	6.1%	62,423	6.3%	13.8%
5 to 19	202,571	22.5%	188,613	19.1%	-6.9%
20 to 24	58,379	6.5%	67,138	6.8%	15.0%
25 to 34	103,279	11.4%	122,864	12.4%	19.0%
35 to 54	277,029	30.7%	262,777	26.6%	-5.1%
55 to 64	85,119	9.4%	138,858	14.0%	63.1%
65 or Older	120,949	13.4%	146,742	14.8%	21.3%
Total	902,195	100.0%	989,415	100.0%	9.7%



Demographics:

Elderly Population by Age

Elderly Population by Age
 State of Montana
 2000 & 2010 Census SF1 Data

Age	2000 Census		2010 Census		% Change 00-10
	Population	% of Total	Population	% of Total	
65 to 66	13,279	11.0%	19,811	13.5%	49.2%
67 to 69	19,262	15.9%	26,745	18.2%	38.8%
70 to 74	29,978	24.8%	34,186	23.3%	14.0%
75 to 79	24,703	20.4%	25,637	17.5%	3.8%
80 to 84	18,390	15.2%	20,342	13.9%	10.6%
85 or Older	15,337	12.7%	20,021	13.6%	30.5%
Total	120,949	100.0%	146,742	100.0%	21.3%



Demographics:

Household Size

Households by Household Size

State of Montana

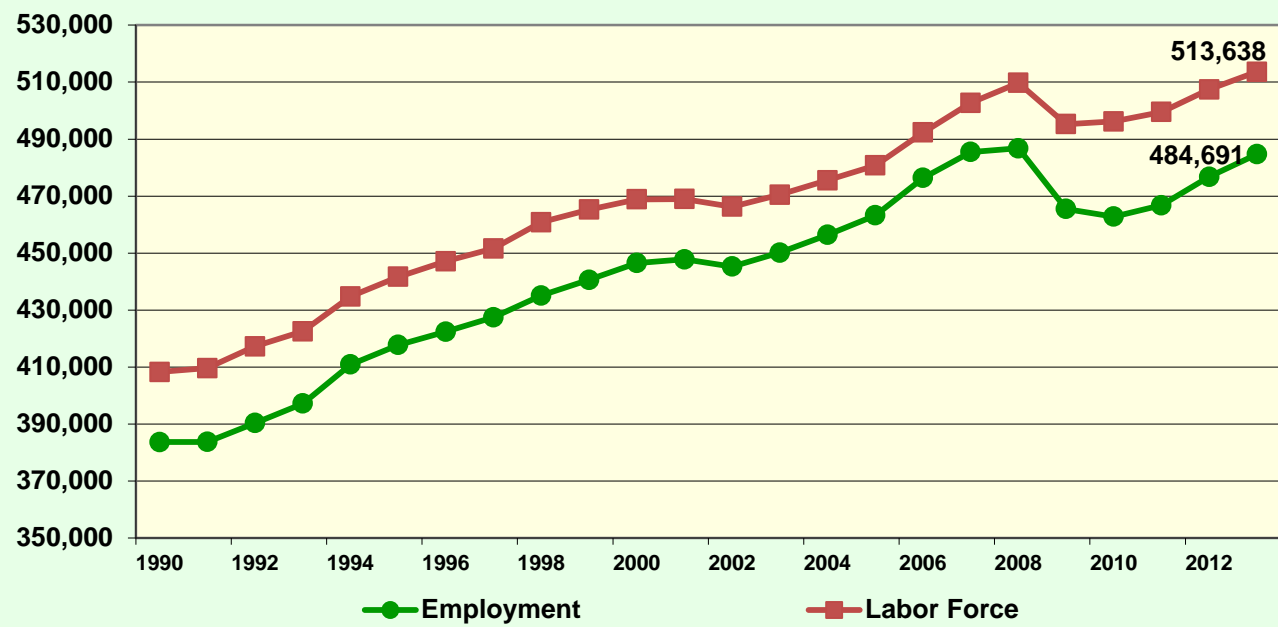
2000 & 2010 Census SF1 Data

Size	2000 Census		2010 Census		% Change 00-10
	Households	% of Total	Households	% of Total	
One Person	98,422	27.4%	121,775	29.7%	23.7%
Two Persons	129,144	36.0%	153,975	37.6%	19.2%
Three Persons	53,287	14.9%	57,046	13.9%	7.1%
Four Persons	46,401	12.9%	44,407	10.8%	-4.3%
Five Persons	20,372	5.7%	20,466	5.0%	.5%
Six Persons	7,106	2.0%	7,563	1.8%	6.4%
Seven Persons or More	3,935	1.1%	4,375	1.1%	11.2%
Total	358,667	100.0%	409,607	100.0%	14.2%



Economics: Labor Force Statistics

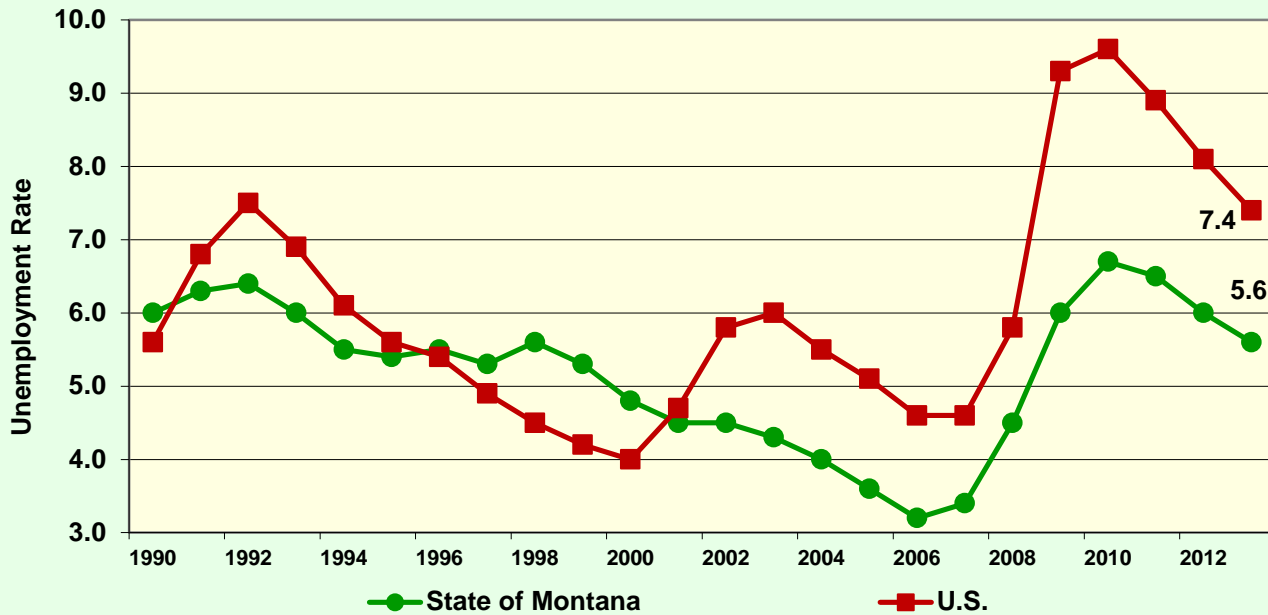
Labor Force and Employment
State of Montana
1990-2013 BLS Data





Economics: Unemployment Rates

Unemployment Rate
State of Montana
1990–2013 BLS Data

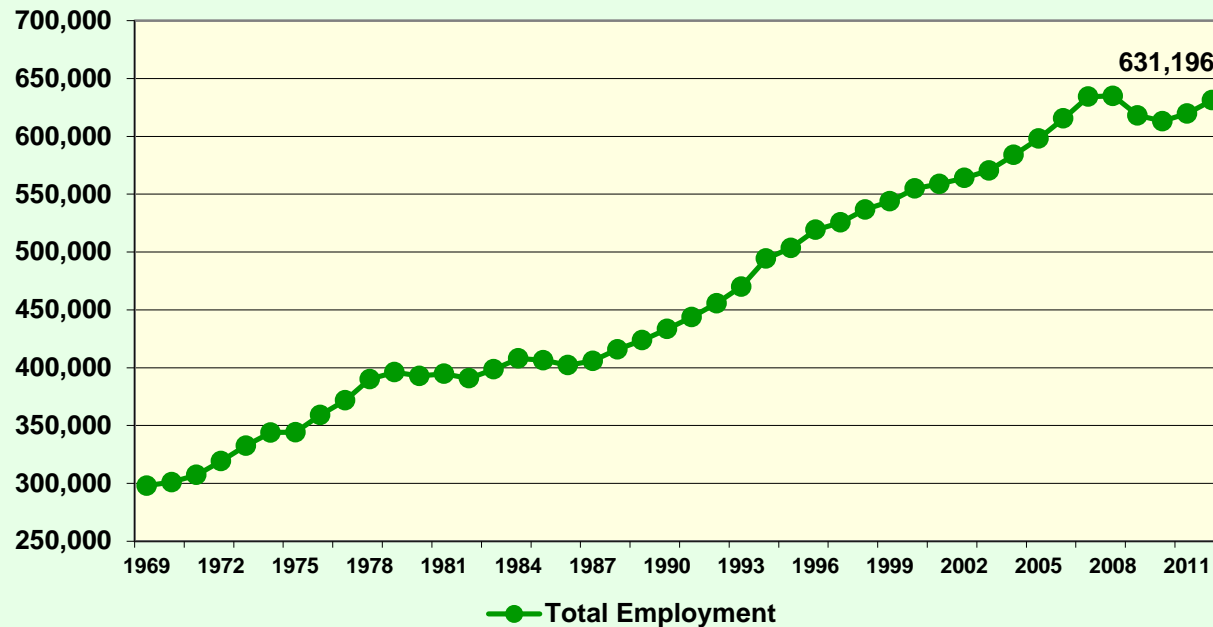




Economics:

Total Full- and Part-Time Employment

Total Employment
State of Montana
1990–2013 BEA Data

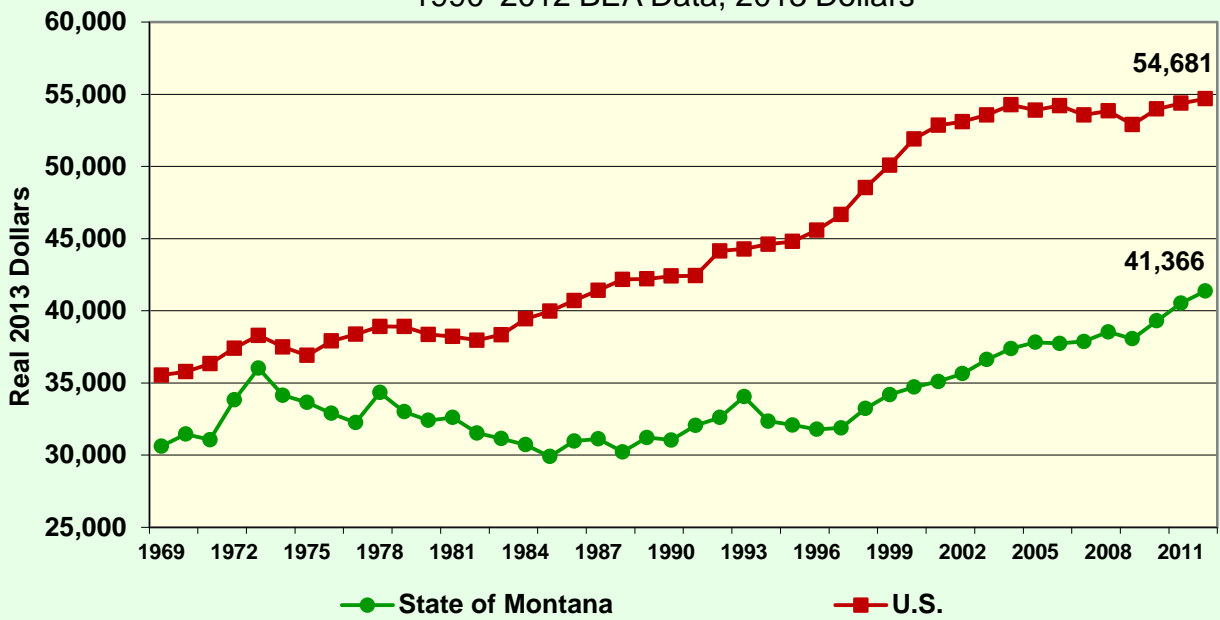




Economics:

Average Earnings Per Job

Average Earnings Per Job
 State of Montana
 1990–2012 BEA Data, 2013 Dollars

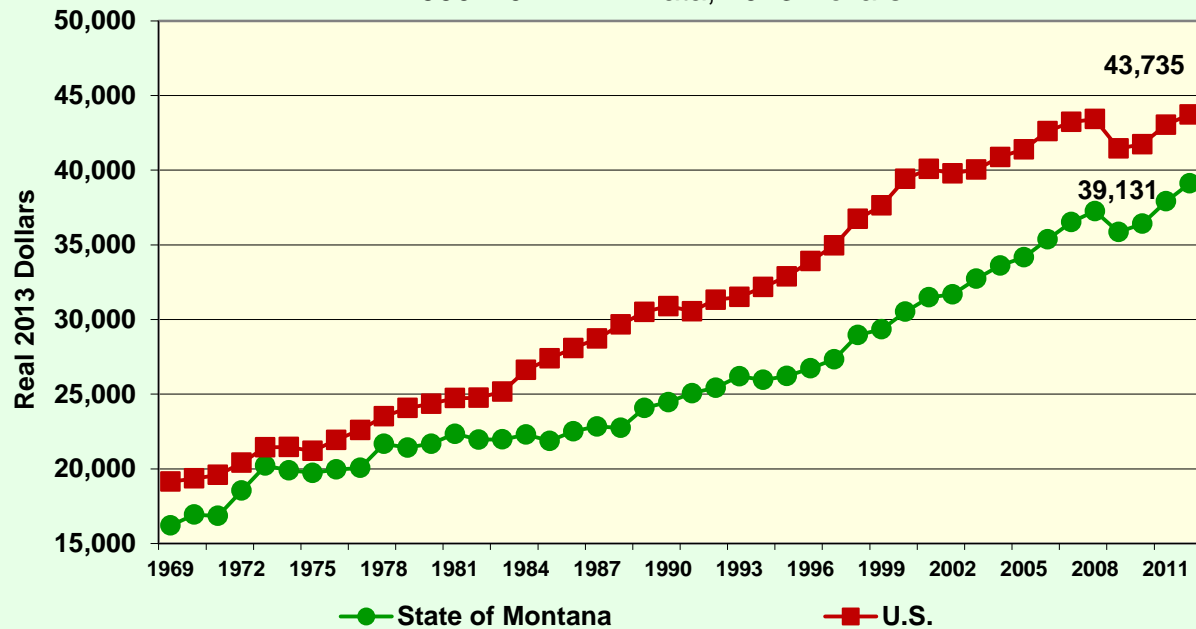




Economics:

Real Per Capita Income

Real Per Capita Income
 State of Montana
 1990–2012 BEA Data, 2013 Dollars





Economics:

Poverty in Montana

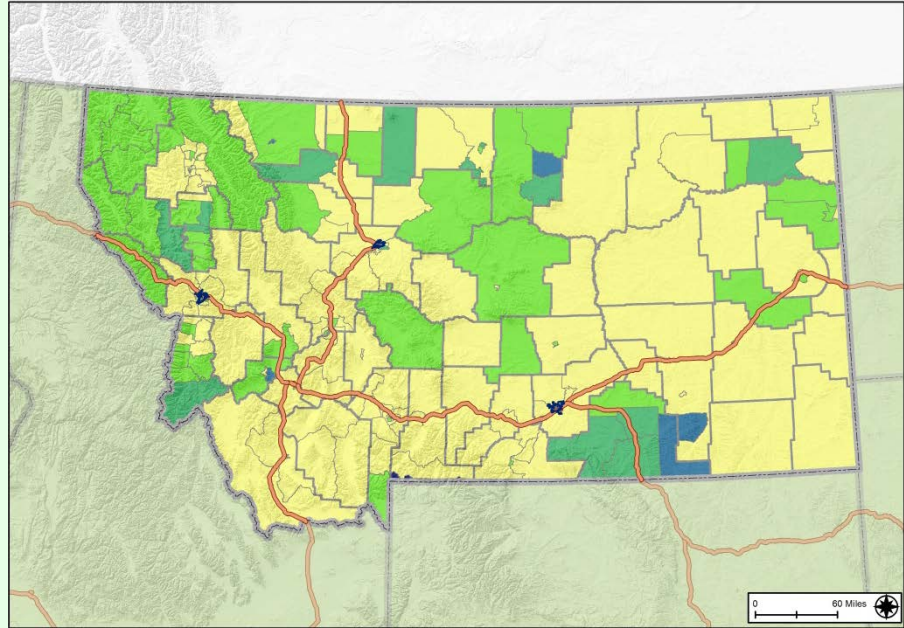
Poverty by Age
 State of Montana
 2000 Census SF3 & 2012 Five-Year ACS Data

Age	2000 Census		2012 Five-Year ACS	
	Persons in Poverty	% of Total	Persons in Poverty	% of Total
Under 6	14,358	11.2%	17,030	11.9%
6 to 17	28,554	22.2%	26,429	18.5%
18 to 64	75,074	58.5%	87,634	61.2%
65 or Older	10,369	8.1%	12,026	8.4%
Total	128,355	100.0%	143,119	100.0%
Poverty Rate	14.6%	.	14.8%	.



Economics:

Concentration Of Poverty by Census Tract: 2012 ACS



Legend

2012 Poverty Rates
 2008-2012 Average Poverty Rate in the State of Montana = 14.8%
 Disproportionate Share Threshold = 24.8% (A disproportionate share exists where the poverty rate in a given area is at least 10 percentage points greater than the study area average).

Entitlement Boundaries	County Boundaries	Poverty Rates 1.3% - 14.8% 14.9% - 24.8% 24.9% - 38.2% 38.3% - 51.6% 51.7% - 65% <small>Disproportionate Share Threshold</small>
Census Tract Boundaries	State Boundaries	
Outside Study Area or No Data	Major Roads	

Sources: US Census Bureau



Economics:

Households by Income

Households by Income

State of Montana

2000 Census SF3 & 2012 Five-Year ACS Data

Income	2000 Census		2012 Five-Year ACS	
	Households	% of Total	Households	% of Total
Less than \$15,000	72,399	20.2%	54,038	13.3%
\$15,000 to \$19,999	30,949	8.6%	26,397	6.5%
\$20,000 to \$24,999	30,624	8.5%	26,983	6.7%
\$25,000 to \$34,999	55,217	15.4%	50,369	12.4%
\$35,000 to \$49,999	65,393	18.2%	61,988	15.3%
\$50,000 to \$74,999	61,505	17.1%	77,931	19.2%
\$75,000 to \$99,999	23,007	6.4%	48,102	11.9%
\$100,000 or More	19,976	5.6%	59,700	14.7%
Total	359,070	100.0%	405,508	100.0%



Housing:

Total Housing Units

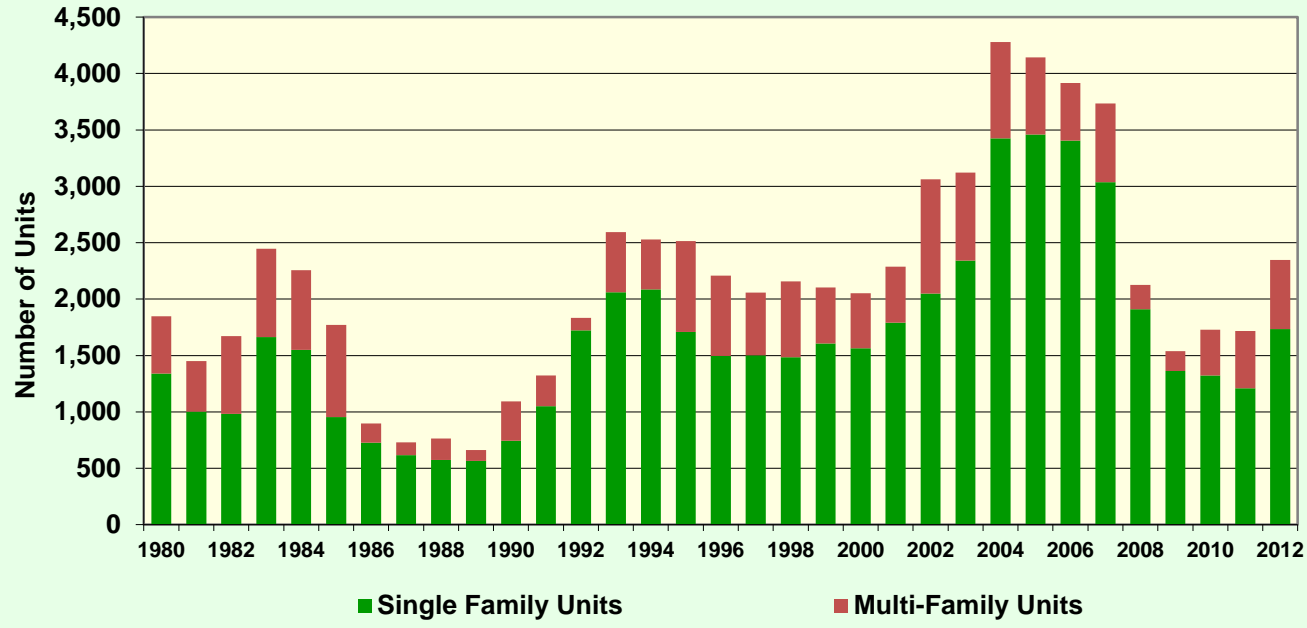
Housing Units by Tenure
State of Montana
2000 & 2010 Census SF1 Data

Tenure	2000 Census		2010 Census		% Change 00-10
	Units	% of Total	Units	% of Total	
Occupied Housing Units	358,667	86.9%	409,607	84.8%	14.2%
Owner-Occupied	247,723	69.1%	278,418	68.0%	12.4%
Renter-Occupied	110,944	30.9%	131,189	32.0%	18.2%
Vacant Housing Units	53,966	13.1%	73,218	15.2%	35.7%
Total Housing Units	412,633	100.0%	482,825	100.0%	17.01%



Housing: Housing Permits

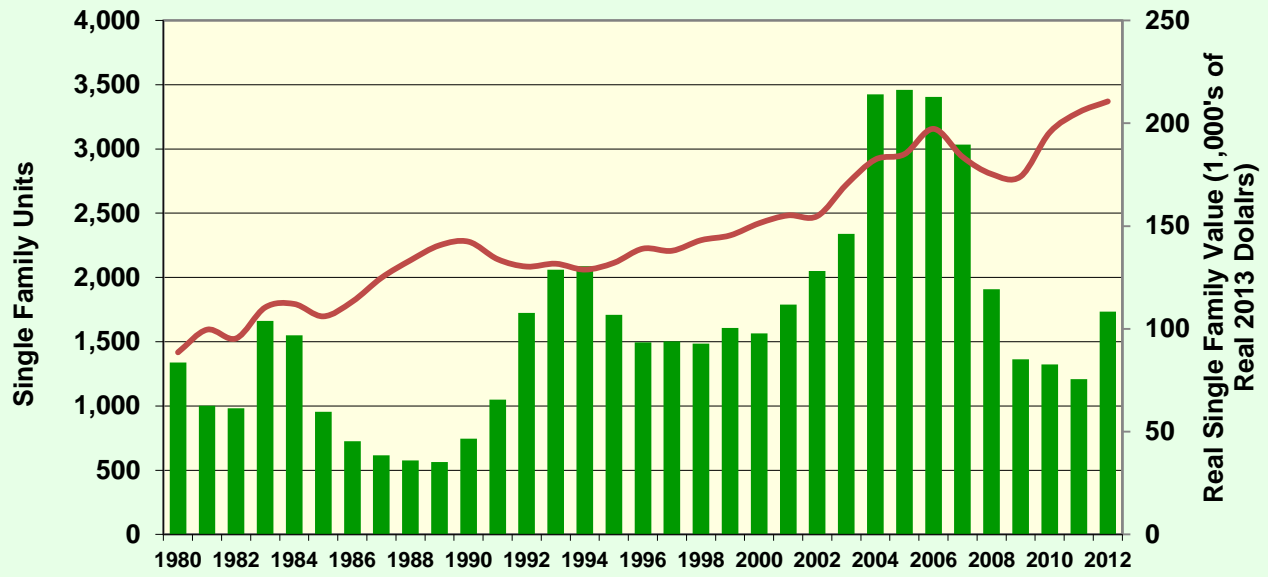
Housing Permits
State of Montana
1990–2012 Census Data





Housing: Housing Permits

Single Family Permits and Value of Construction
State of Montana
1990–2012 Census Data





2014 Survey

Suggested Allocation of Resources

How Would You Allocate Resources

State of Montana

2014 Housing and Community Development Survey

Area	Percentage Allocated
Housing	25.9
Human Services	16.7
Infrastructure	15.4
Economic Development	15.2
Public Facilities	9.3
All Other	1.4
Total	100.0%



2014 Survey

Preliminary Pub. Fac. Needs

The Need for the Following Community and Public Facilities

State of Montana

2014 Housing and Community Development Survey

Question	No Need	Low Need	Medium Need	High Need	Missing	Total
Childcare facilities	2	2	26	20	44	94
Youth centers	3	8	25	16	42	94
Parks and recreational centers	4	12	19	16	43	94
Community centers	3	10	24	14	43	94
Healthcare facilities	4	5	27	14	44	94
Senior centers	3	9	26	13	43	94
Public buildings with improved accessibility	3	11	18	12	50	94
Residential treatment centers	3	14	23	10	44	94
Other infrastructure activities	1		1	2	90	94



2014 Survey

Preliminary Infrastructure Needs

The Need for the Following Infrastructure Activities

State of Montana

2014 Housing and Community Development Survey

Question	No Need	Low Need	Medium Need	High Need	Missing	Total
Sewer system improvements	1	5	14	32	42	94
Water system capacity improvements	1	6	14	31	42	94
Street and road improvements	1	4	18	30	41	94
Sidewalk improvements	3	5	17	27	42	94
Water quality improvements	2	8	18	24	42	94
Flood drainage improvements	2	2	25	24	41	94
Storm sewer system improvements	1	10	18	23	42	94
Solid waste facility improvements	2	8	20	22	42	94
ADA improvements to local infrastructure	2	9	20	20	43	94
Bicycle and walking paths	5	14	15	19	41	94
Bridge improvements	2	4	27	18	43	94



Summary



- 1. Continuing population growth**
- 2. Increasing elderly population**
- 3. Rising large households**
- 4. Recovery in employment**
- 5. Persistent poverty**



Discussion

1. **What are our greatest needs?**
2. **What are our most difficult barriers and constraints?**
3. **What can we do about these barriers and constraints?**
4. **Are there other concerns?**



Discussion

- 1. What C&PF should we enhance or add in the next five years?**
- 2. How can we influence the production and operation of our existing facilities?**
- 3. Other Concerns?**



Conclusion

Contact Information:

Ms. Jennifer H. Olson

Grants Bureau Chief

406-841-2770

jeolson@mt.gov